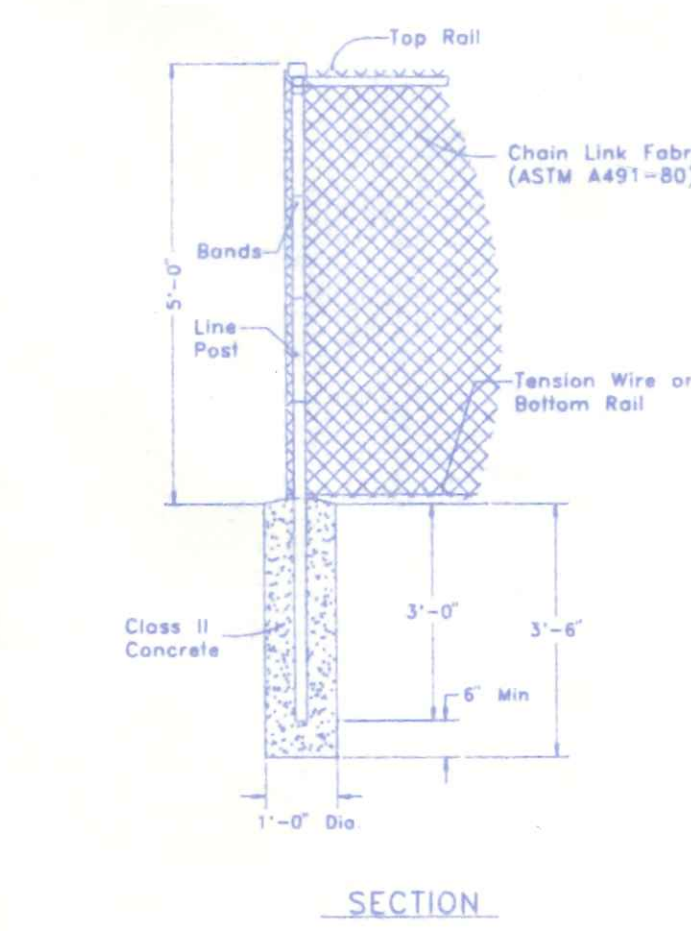
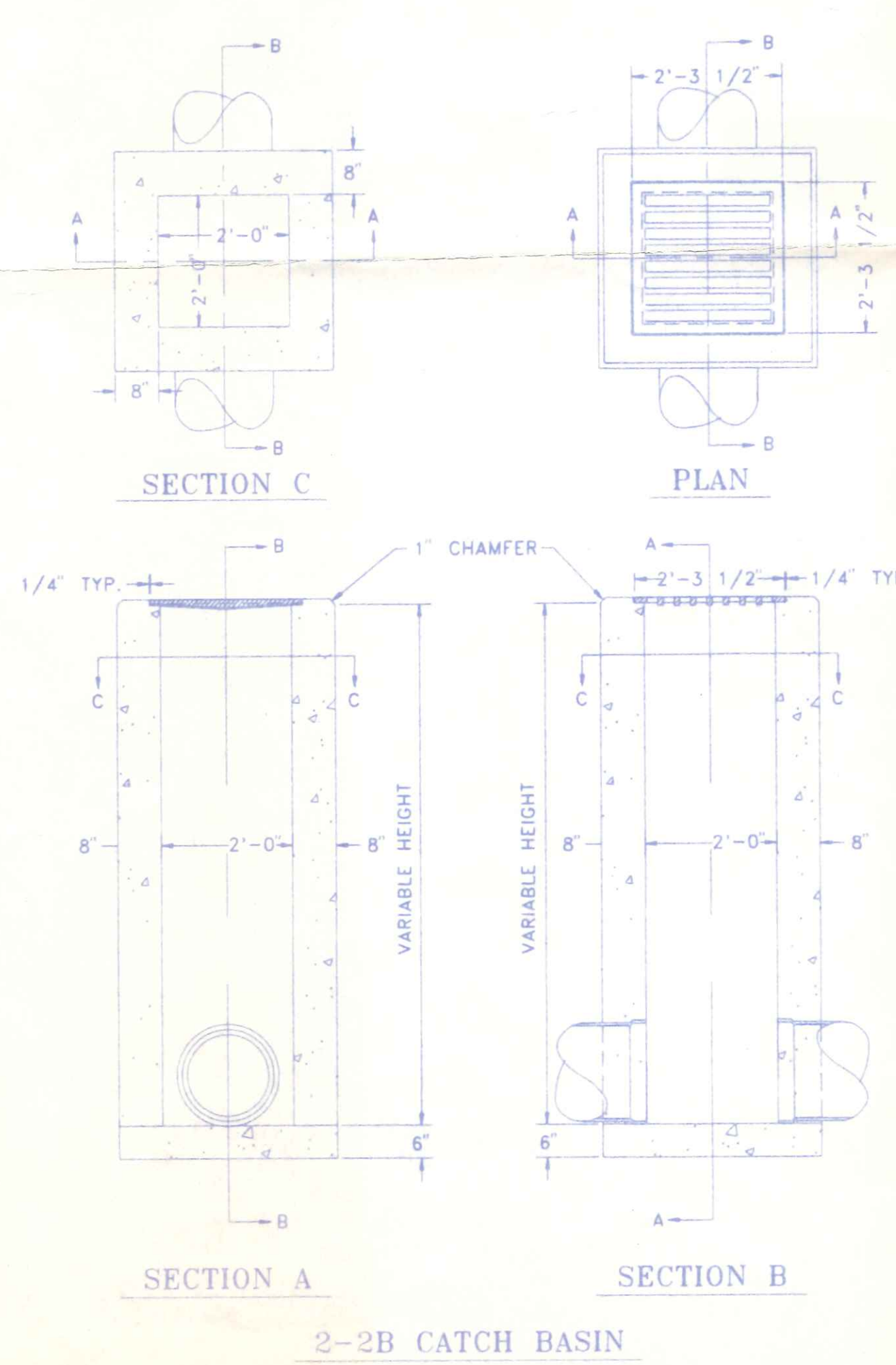
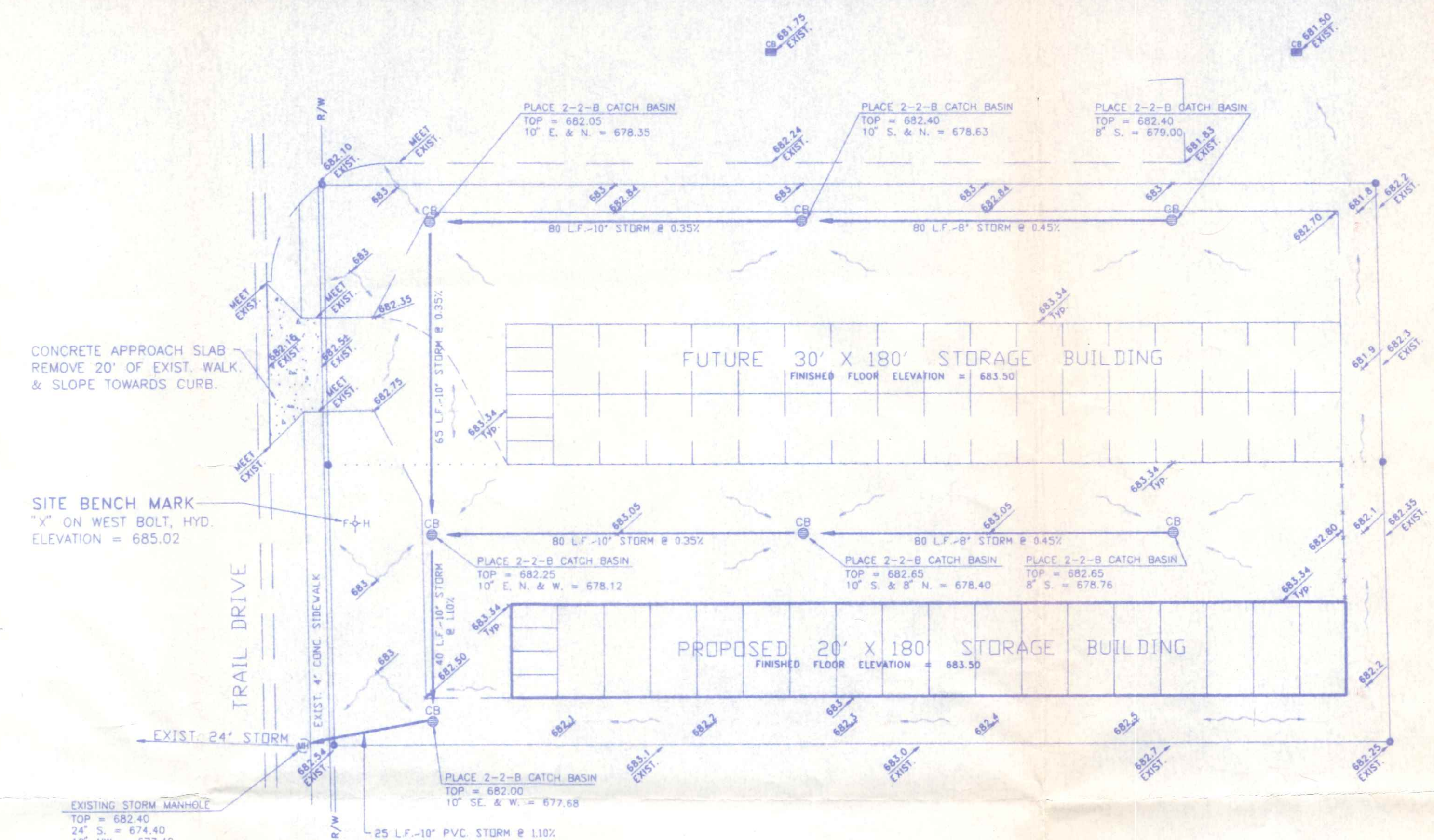
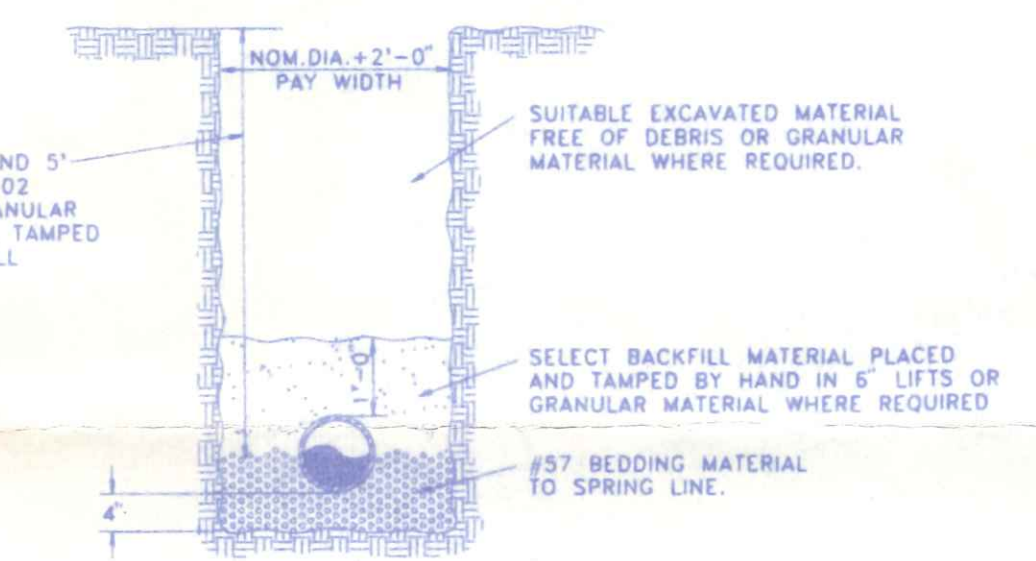
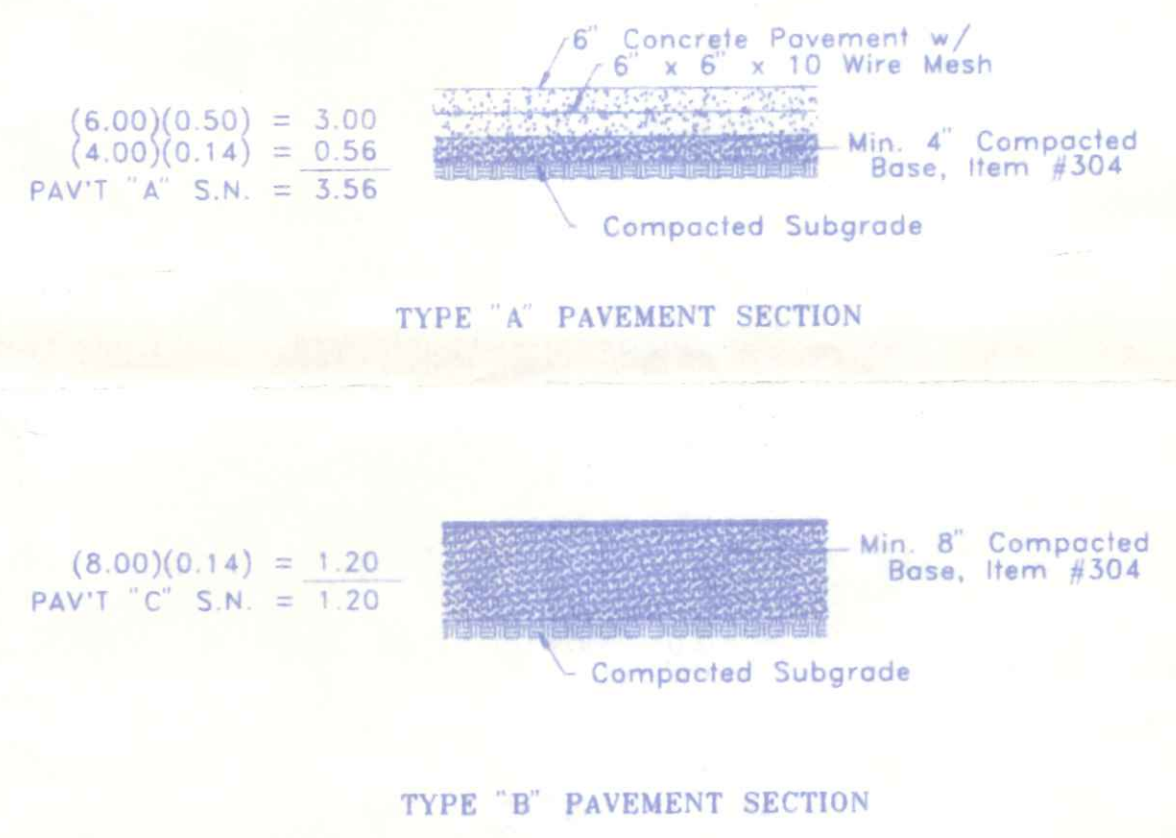
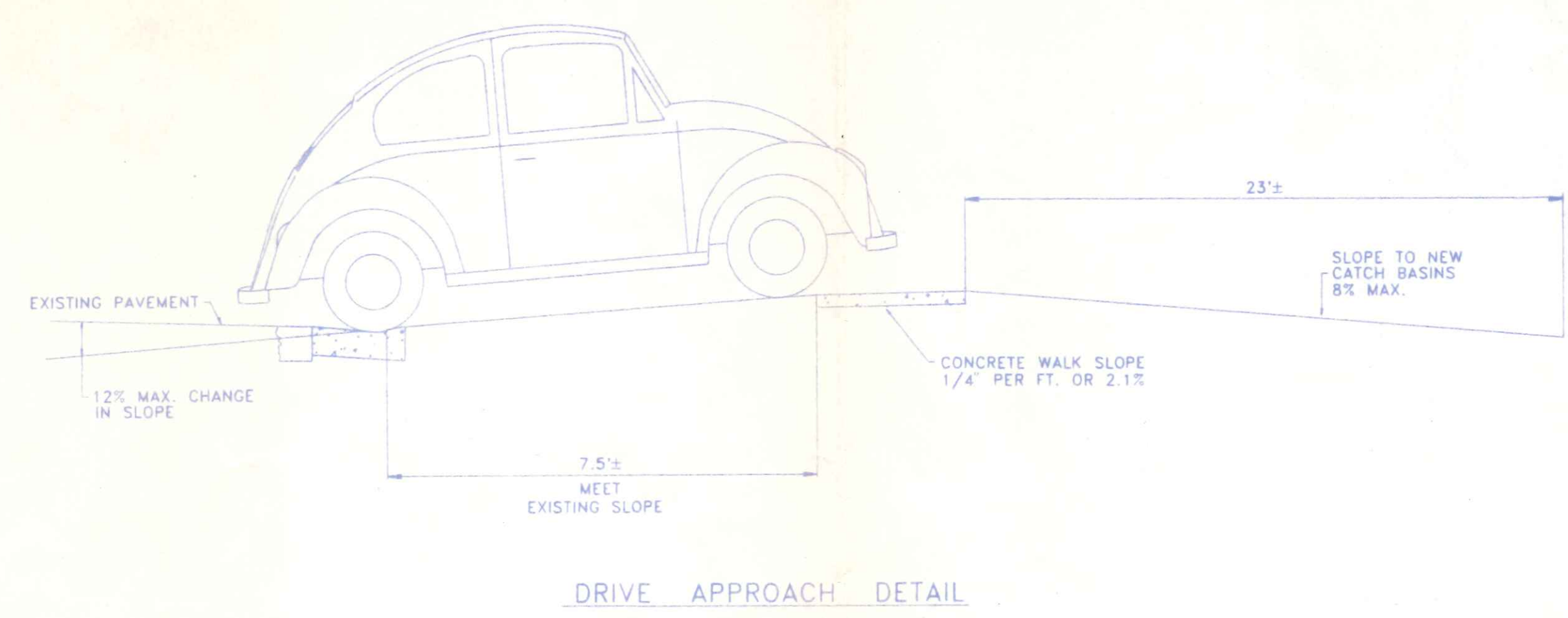


REVISIONS	DATE	BY

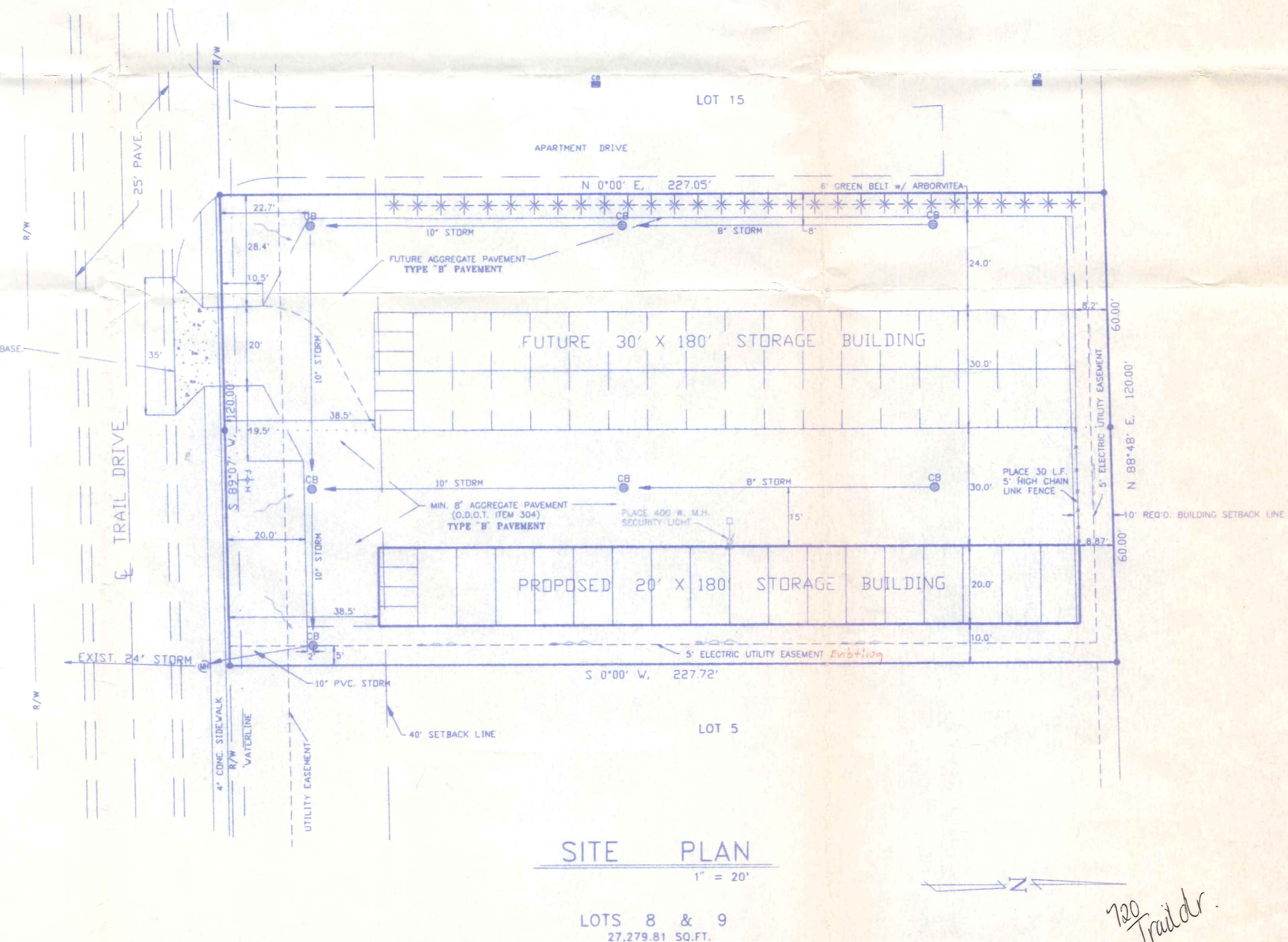
NAPOLÉON ENGINEERING & SURVEYING, INC.
 SUBDIVISIONS BUILDING DESIGN CONSULTING ENGINEERS
 601 WEST PROFESSIONAL BUILDING
 104 CLEVELAND AVENUE
 P.O. BOX 671
 NAPOLÉON, OHIO 43645
 (614) 562-9661
 MARY S. CROCKEN, P.E. PRESIDENT

VALEN STORAGE BUILDINGS
 CITY OF NAPOLÉON, OHIO
 SITE PLAN & DETAILS
 LOTS 8 & 9, DECK & SCHULTZ ROYAL

DRAWN BY: R.D.S.
 DATE: APRIL, 1995
 SCALE: NOTED
 SHEET NO. 1 OF 1



Item	Specification
Chain Link Fabric	ASTM A491-80
Line Posts	2.375" O.D. Type I or II or 3 1/2" x 3 1/2" Roll Formed Sections
Terminal Posts	2.875" O.D. Type I or II
Tension Wire	#7 Gal. Al. coated steel coil
Fittings	ASTM A153-80
Top & Bottom Rail	1.66" O.D. Type I or II
Braces	Same material as Top rail



720 Traldr.